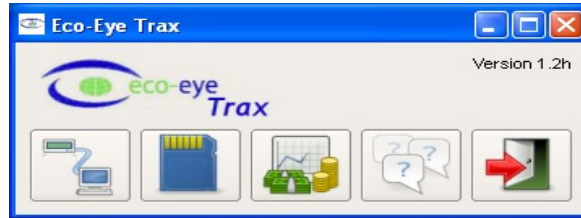





Updating from Trax2

For various reasons, Trax has been split into 2 programs handling the card and usb output separately so the window below is no longer in use.



	Use	Replaced by
	Connecting Smart to Trax using the USB cable	trax_usb
	Memory card operations	trax_card
	Graphs and analysis of data from card logging	trax_card

New in Trax 3

- Year graph added
- Header changed - new layout
- Right click menu to zoom in and out between graphs
- Added card icon to header for download
- Standing charge can now be entered for demand
- Not on general release yet but temperature will be recorded to the memory card for SmartPC, stored to datastore and displayed on day graph. This is not available for SmartPV – sorry!
- Back up file written to data store as card is initialised
- Card download routine improved.
- Month graph, day of month changed to red for Saturdays and Sundays for easier reading.
- Trax_usb connection routines rewritten so that, in most cases, it no longer requires manual intervention and can be automatically started with windows.
- Upload to Thingspeak added
- Upload to Plotwatt will be in the next version
- Live graph now has extra fields for hour and day