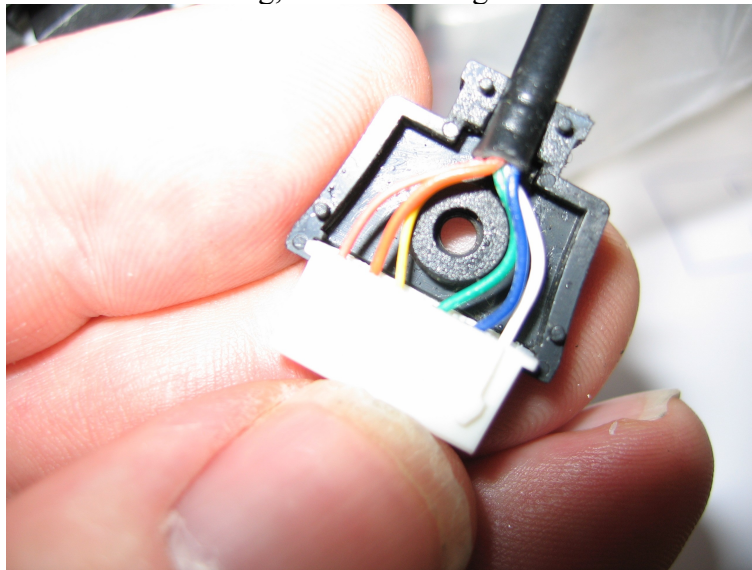


Eco-eye cable:

Details below based on this socket wiring, worth checking!



- 1-Red..... 0V[nearest to current transformer sockets]
- 2-Orange... new switch (normally high, low when switch closed)
- 3-Yellow... +V (2v2-5V guaranteed operation)
- 4-Green... rx rs232. input from COM1 port on pc.
- 5-Blue... tx logic swing (0 to +V)
- 6-White.. rx logic swing (0 to +V)[nearest to power connector]

So for normal use

Red is ground

White is RX

Blue is TX